

# QuickTie™ Accessories



## Hex & Weld Nuts

### MPHN, MPWN

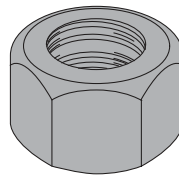
#### PRODUCT FEATURES:

Hex nuts are used in various QuickTie assemblies (e.g. QuickTies, Epoxy Anchors, Anchor Bolts, etc.).

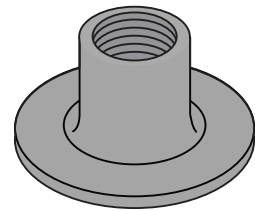
Weld nuts are used to connect QuickTie Masonry cables to precast lintels, and can also be used with wood frame cables in various conditions (e.g., attaching to the underside of plates or floor systems).

#### MATERIAL:

Grade 2, Zinc Plated



MPHN



MPWN