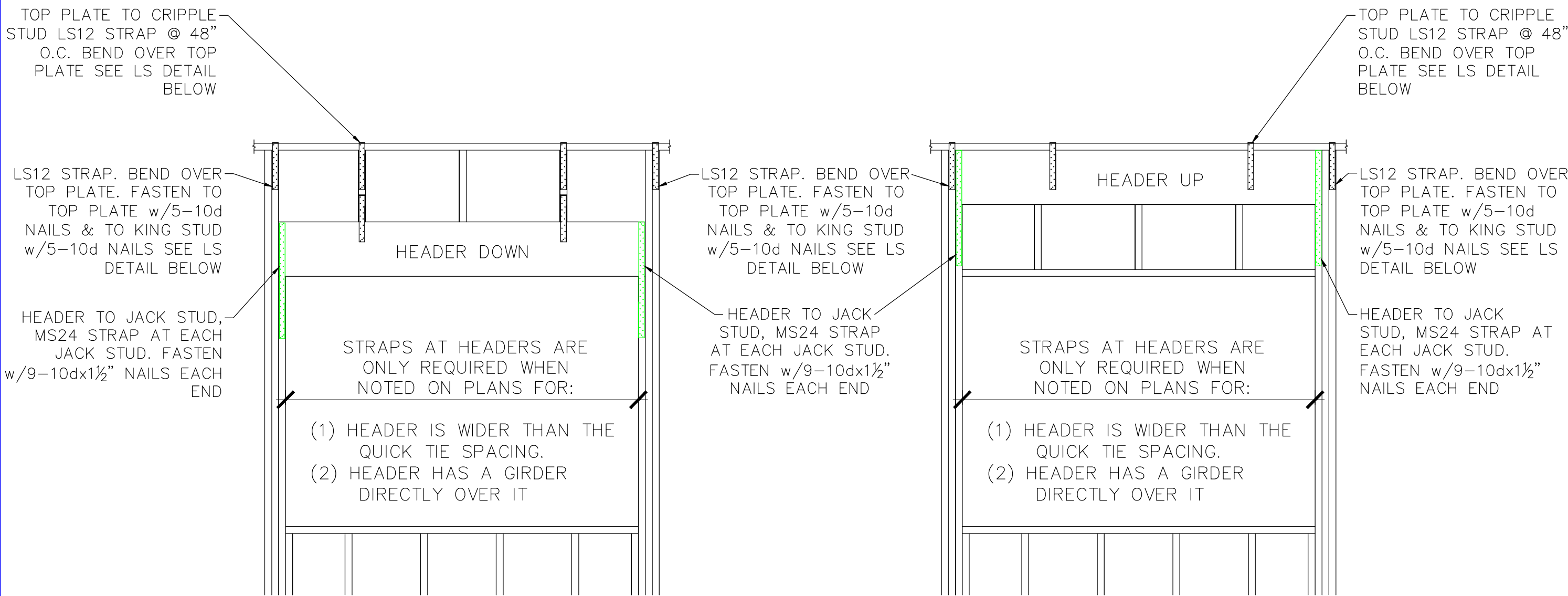


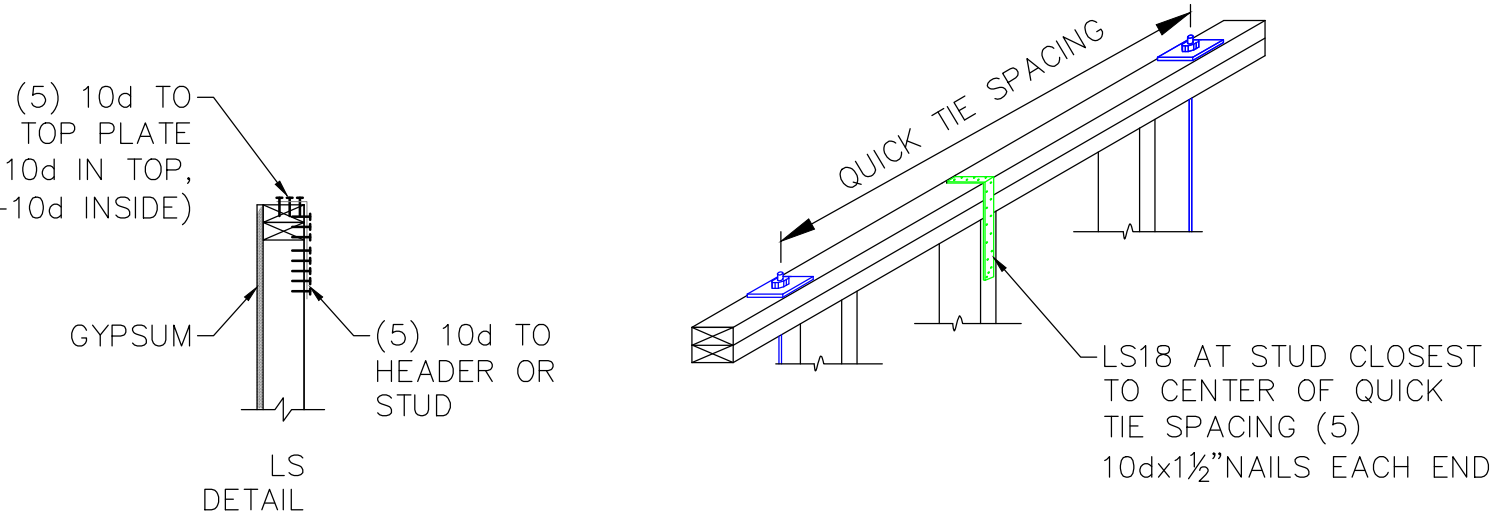
QUICK TIE INSTALLATION DETAILS

1 WHEN REQUIRED HEADER STRAPPING DETAIL (USE WHEN NOTED)

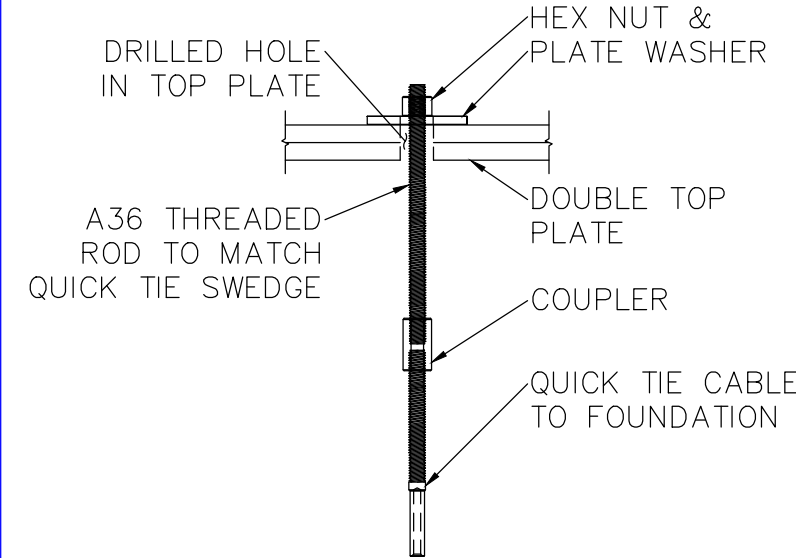


3 WHEN REQUIRED LS18 STRAPPING AT GWB (USE WHEN NOTED)

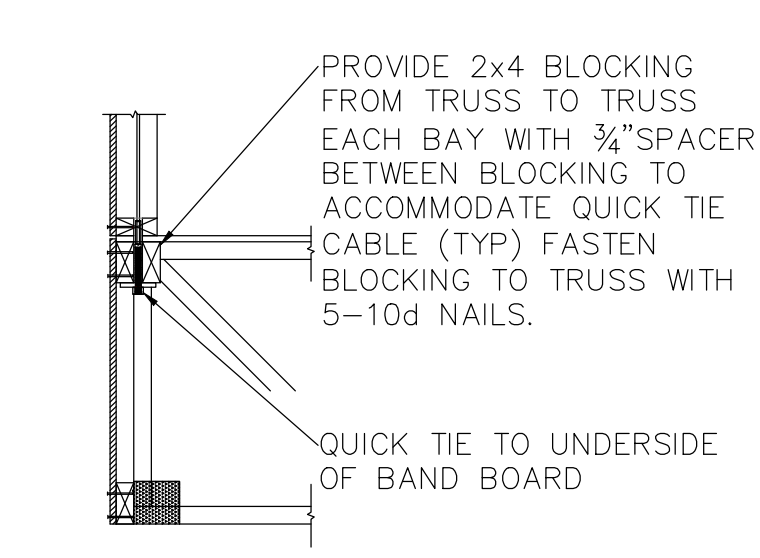
PROVIDE:
(1) 1-LS18 STRAP AT MID SPAN-BETWEEN QUICK TIES SPACED 4'-0" TO 8'-0".



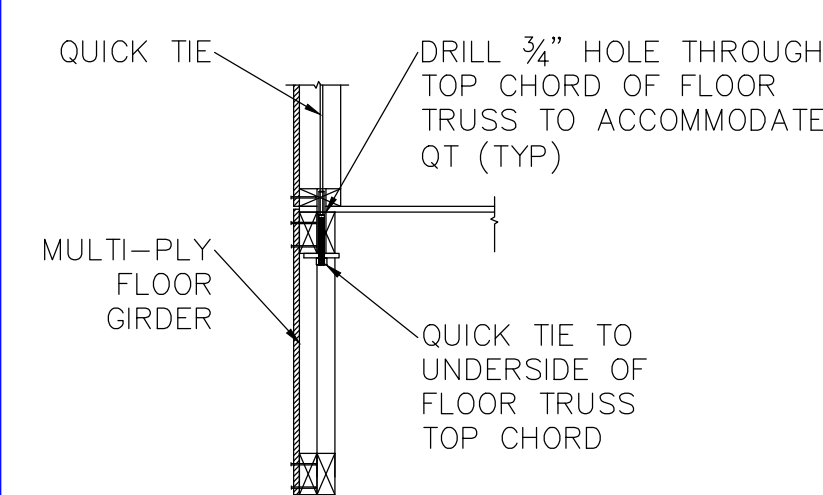
4 WHEN REQUIRED EXTENSION CONNECTION



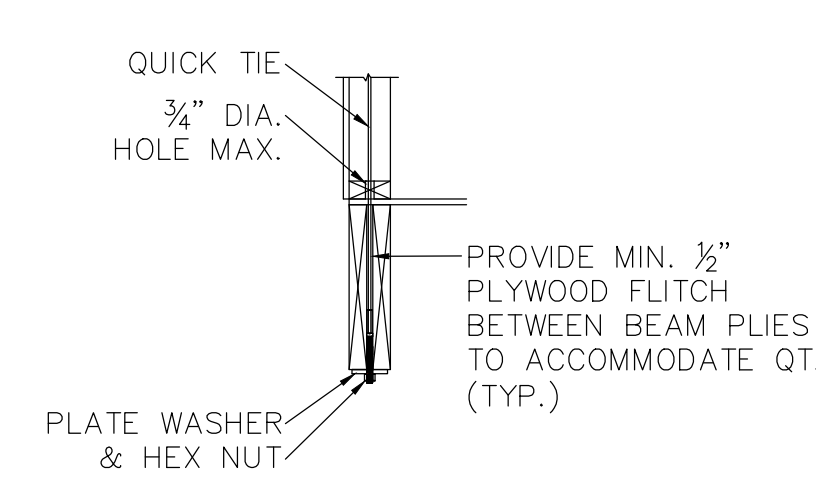
5 RIM BOARD CONNECTION



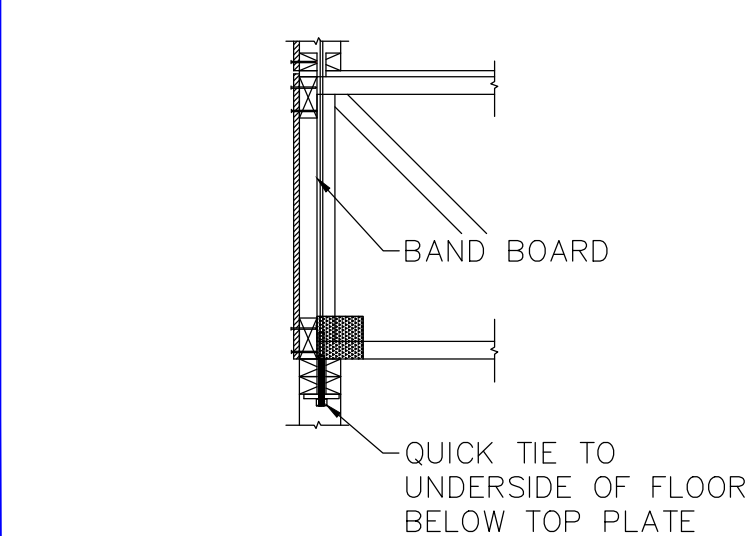
6 FLOOR TRUSS CONNECTION



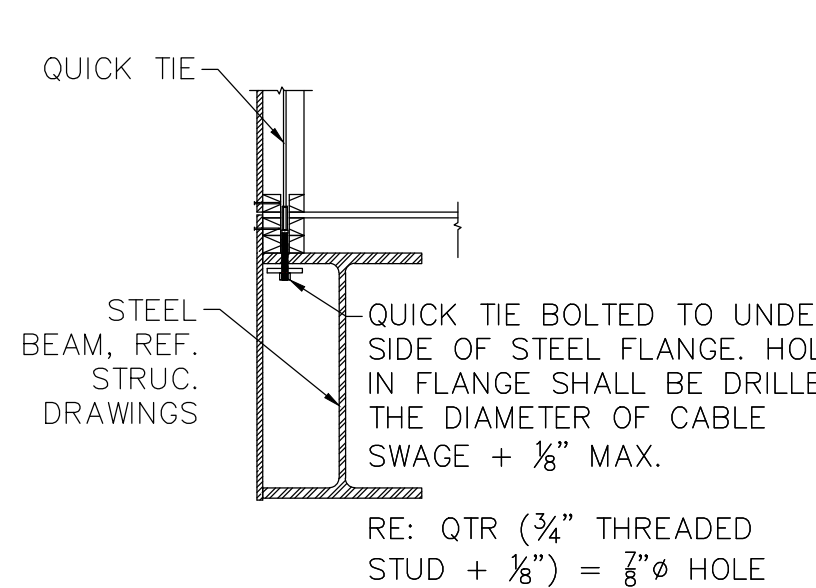
7 WOOD BEAM CONNECTION



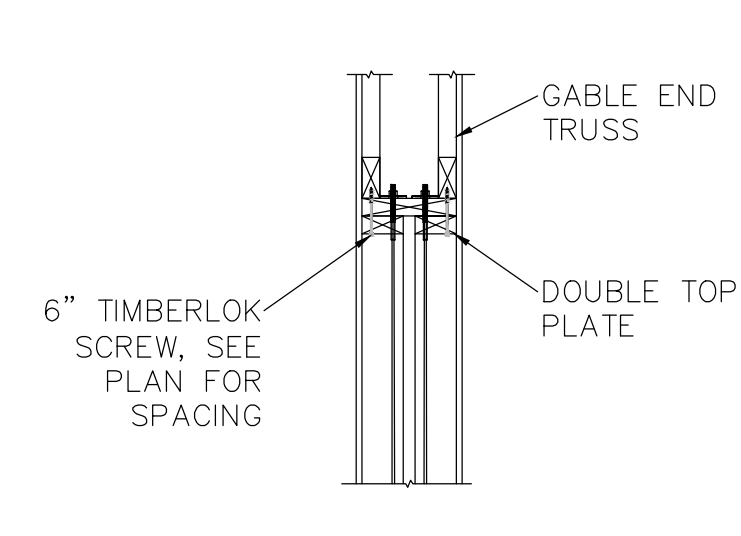
8 QT UNDER TOP PLATE



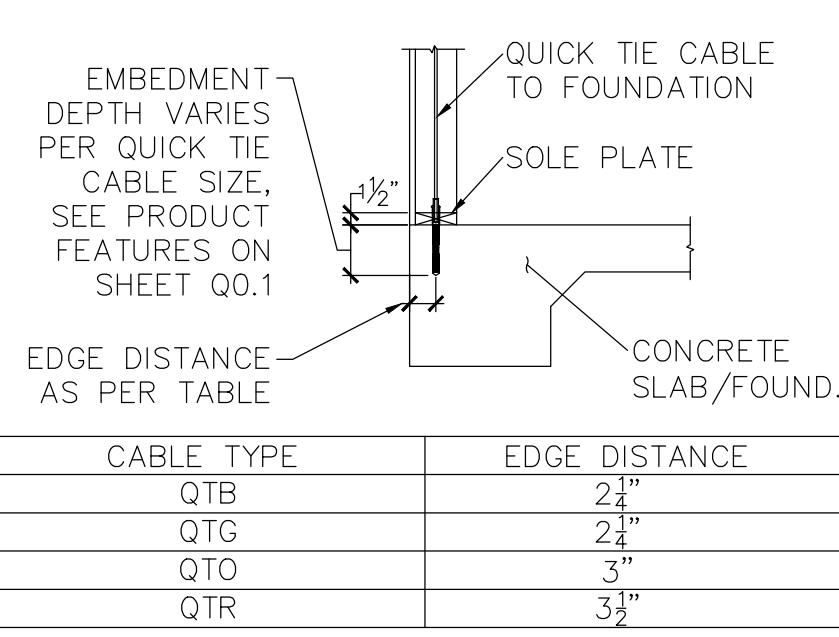
9 STEEL BEAM CONNECTION



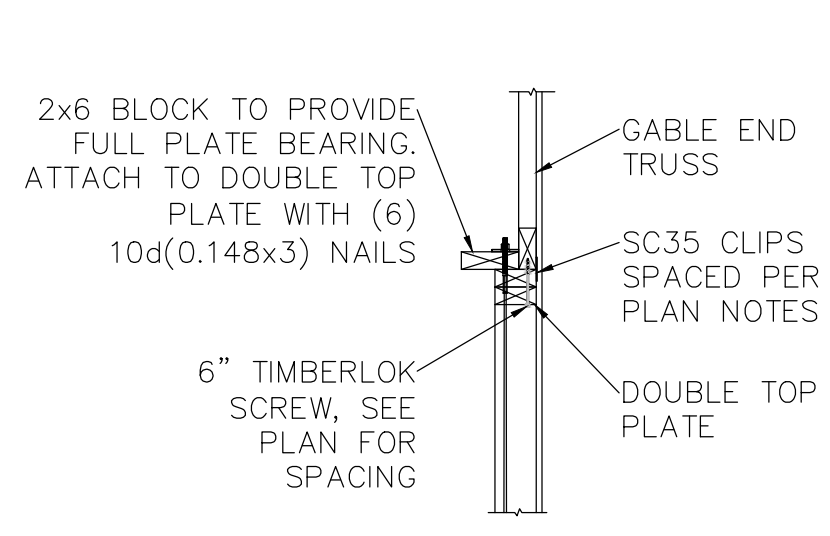
10 PARTY WALL CONNECTION



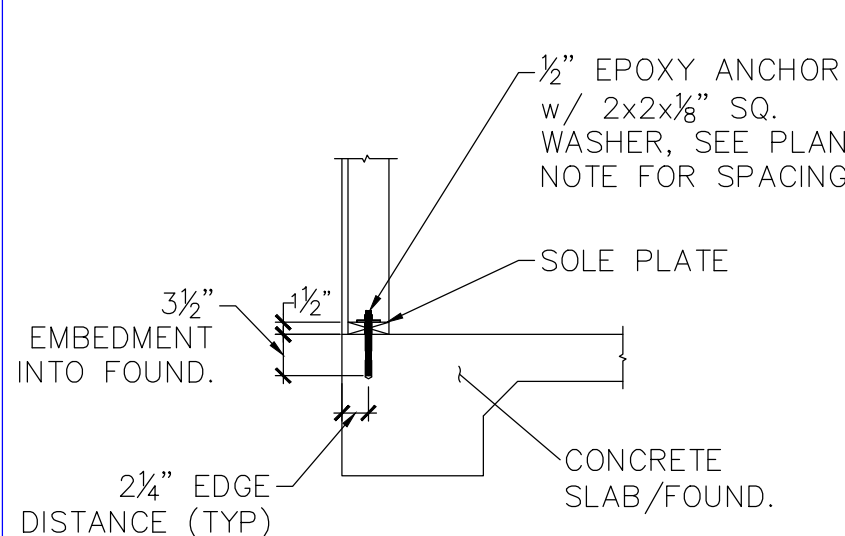
11 FOUNDATION CONNECTION



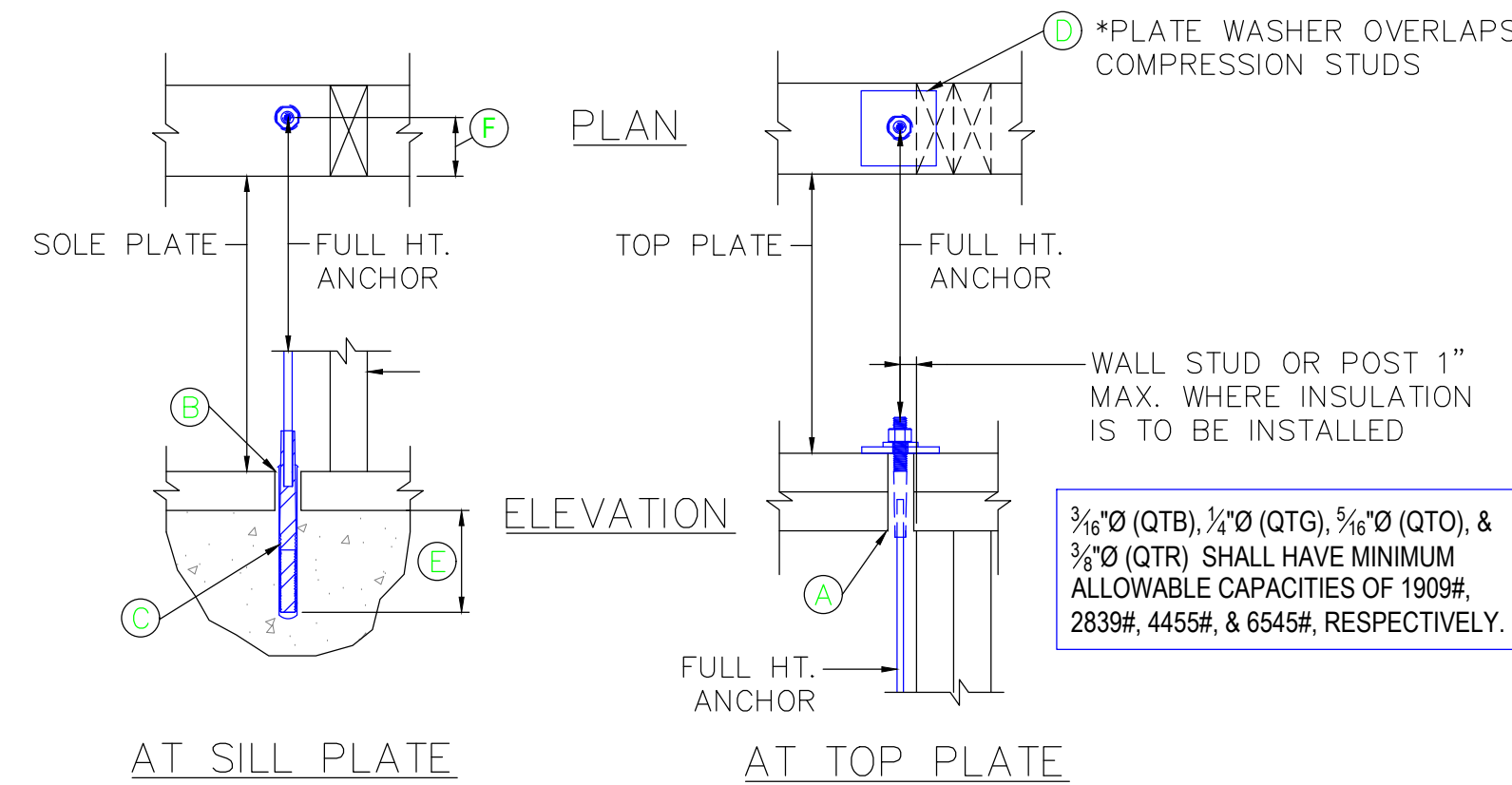
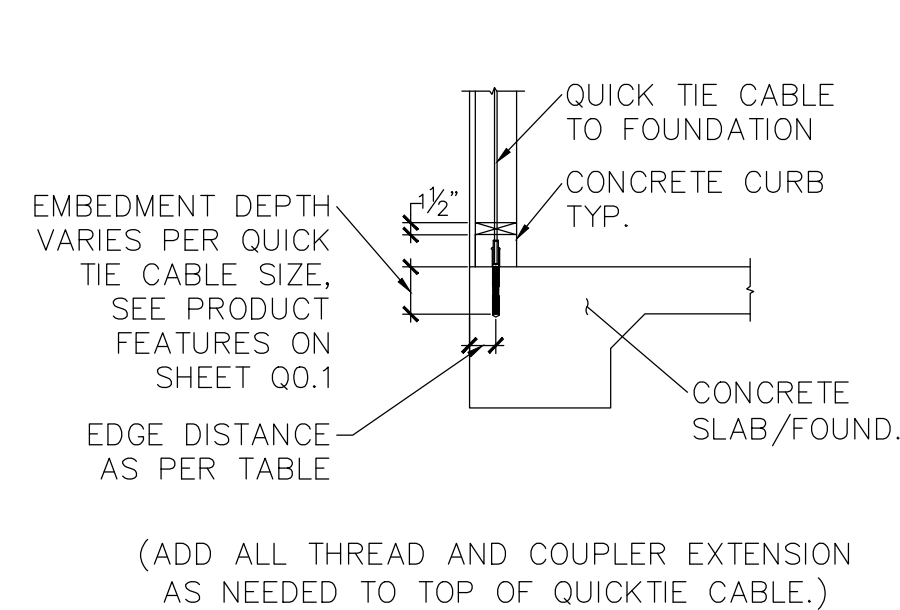
12 GABLE END CONNECTION



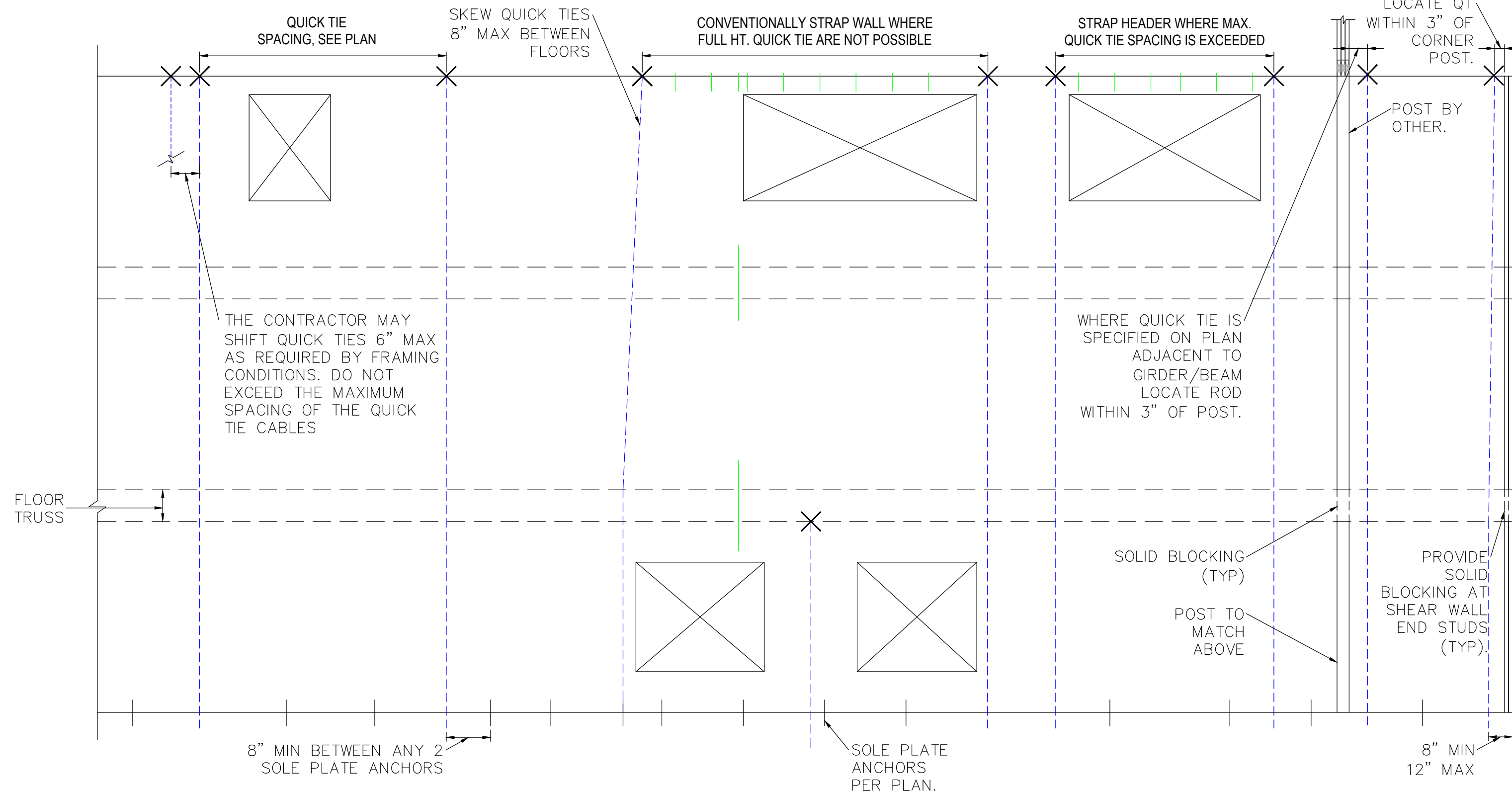
13 EPOXY ANCHOR CONNECTION



14 CONCRETE CURB TYPICAL



FULL HEIGHT ANCHOR INSTALLATION CHART						
FULL HT. ANCHOR	(A) TOP PLATE HOLE	(B) SILL PLATE HOLE	(C) CONCRETE HOLE	(D) WASHER SPEC.	(E) MIN EMBEDMENT DEPTH	(F) MIN EDGE DISTANCE
QTB	1" Ø	5/8" Ø	3/8" Ø	2 1/2" x 2 1/4" x 3/8"	4"	4"
QTG	1" Ø	5/8" Ø	3/8" Ø	3" x 3" x 1/4"	4"	4"
QTO	1" Ø	3/4" Ø	3/4" Ø	3" x 3" x 1/4"	6 1/2"	6 1/2"
QTR	1" Ø	7/8" Ø	7/8" Ø	3" x 4 1/2" x 1/2"	8 1/8"	8 1/8"
MONO						

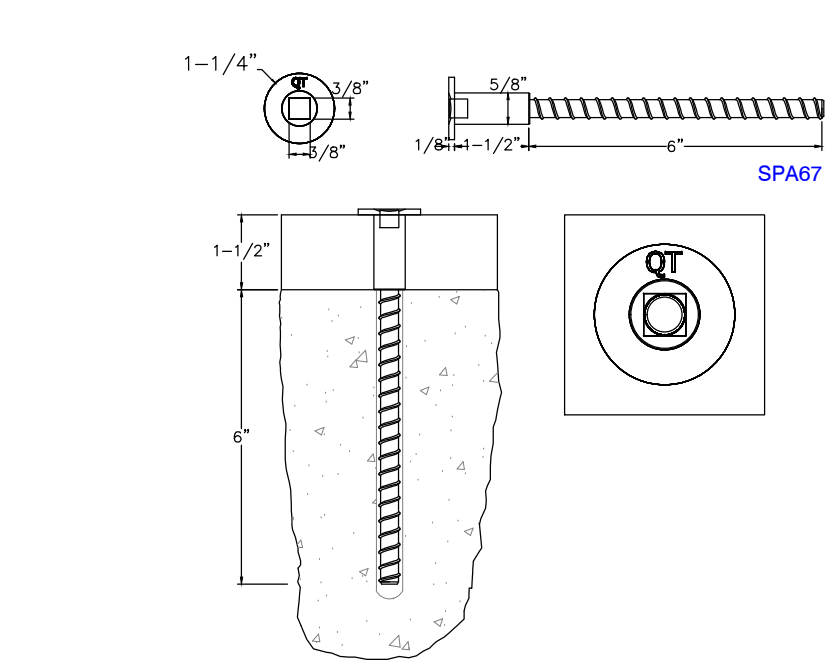


QUICK TIE ANCHORING SYSTEM INSTALLATION SCHEMATIC

SCALE : 1/8" = 1'-0"

HEADER NOTES:
1. STRAPS AT HEADERS ARE ONLY REQUIRED WHEN:
A. WHEN HEADER IS WIDER THEN THE QUICK TIE SPACING.
B. WHEN HEADER HAS A GIRDER TRUSS DIRECTLY ABOVE.
2. PROVIDE 2-CS16 STRAPS ON KING AND JACK STUDS THROUGH FLOOR SYSTEM BELOW IF THERE IS NOT A QUICK TIE ADJACENT TO OPENING.

2 QUICK TIE SPARTan™ ANCHOR



SPARTan™ ANCHOR SPACING (IN.) EQUIVALENTS FOR EPOXY ANCHOR

Threaded Rod Diameter	SP #2, PT Sill Plate (SG = 0.55)					
	16"	24"	32"	36"	40"	48"
1/2"	30	45	61	68	76	91
5/8"	21	32	42	48	53	64

Notes:
1. Tabulated values are based on the lateral resistance of sill plate connection when loaded parallel to grain.
2. Minimum requirements: Threaded rod length = 6"; Embedment depth = 3.5"; Edge distance = 2.25"; End distance = 7"; Concrete strength = 2,500 psi and Sill plate thickness = 1.5".
3. Engineer-of-Record (EOR) to check anchor spacing limits for out-of-plane bending and deflection of sill plate.

SPARTan™ ANCHOR ALLOWABLE SHEAR VALUES (ASD) - CONCRETE AND WOOD

Applied Load	Allowable Loads (lb) ^{1,2}	
	Load Direction	Slab/Curb ^{3,4}
Shear	Parallel to Wood Grain (F _v)	1,395
	Perpendicular to Wood Grain (F _p)	665
Tension	Uplift (U)	1,155
	Uplift (U) with Washer ^{5,6}	1,705

Notes:
1. Tabulated values are applicable to uncracked concrete and pressure treated Southern Pine #2 lumber.
2. Allowable load values are determined using a conversion factor (φASD) of 1.6. The conversion factor is based on the controlling load case: (0.9D+W)/(0.9D+0.6W) where Dead Load (D) = 30% and Wind Load (W) = 70%. Adjustments shall be made where other load combinations control.
3. Anchor design conforms to ACI 318, with no supplementary reinforcement considered.
4. Anchor bending yield strength, F_{yb} = 100,000 psi & Concrete dowel bearing strength = 7,500 psi
5. Allowable loads are provided for a 1.8 load duration (CD). No further increases are permitted.
6. Allowable loads use a wet service factor CM = 0.7(MC>19%). No further increases are permitted.
7. Minimum edge distance = 2.75 inches, minimum end distance = 6.75 inches (shear) and 6 inches (tension). Minimum anchor spacing = 6.75 inches. Minimum embedment = 6 inches.
8. Minimum concrete compressive strength is 2,500 psi.
9. Minimum curb width is 6 inches.
10. Washer size is 2 inch x 2 inch x 1/4 inch.



DATES: REVISIONS:

DATE	REVISION
XXXX/XXXX	EOR REVIEW

CONTRACTOR

XXX

ARCHITECT

XXX

PLAN DATE: XX/XX/XXXX

STRUCTURAL

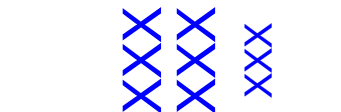
XXX

PLAN DATE: XX/XX/XXXX

QUICK TIE PRODUCTS, INC. DOES NOT TAKE OR ASSUME ANY RESPONSIBILITY FOR ANY ASPECT OF THE ACTUAL INSTALLATION OF THIS PROJECT. BUILDER SHALL HAVE THE QUICK TIE SYSTEM INSTALLED ON THIS PROJECT ACCORDING TO THE PLANS, SPECIFICATIONS, AND INSTALLATION INSTRUCTIONS. BY A TRAINED QUICK TIE INSTALLER. BUILDER AND INSTALLER SHALL REVIEW THESE DRAWINGS AND EXAMINE THE JOBSITE PRIOR TO INSTALLATION OF THE QUICK TIE SYSTEM. ANY POSSIBLE CONFLICTS WITH REGARDS TO PLACEMENT OF QUICK TIES SHALL BE RESOLVED BY THE BUILDER AND INSTALLER WITH CONSULTATION OF QUICK TIE IF NECESSARY PRIOR TO COMMENCEMENT OF INSTALLATION.

PROJECT

JOB NUMBER: MF-ST-00-00-00



DESIGN CRITERIA

BUILDING CODE: FLORIDA
BUILDING CODE, 2020 EDITION

WIND SPEED: 140 MPH

CATEGORY: II

EXPOSURE CATEGORY: C

ENCLOSURE: MWFRS

TYPICAL FRAMING TIE DOWN DETAILS

QD1

5 OF 6 SHEETS

DATE: XXXXXXXX
SCALE: AS SHOWN
DRAWN BY: MCR